



Kindergarten Orientation 2025 Program

OPEN DAY

T2 Week 4

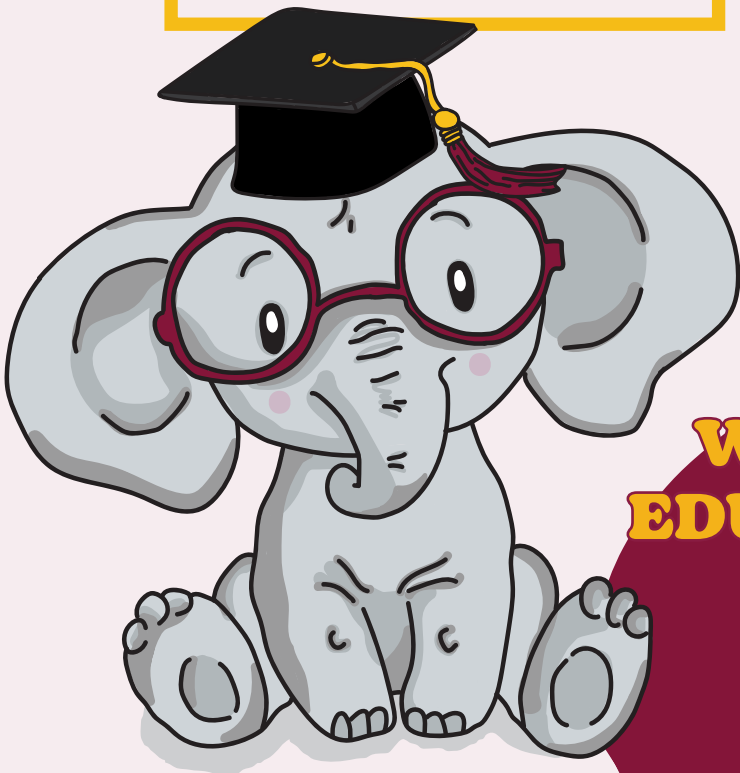
Thursday 22nd May, 2025
Morning Session: 9:30am

Open to parents and children.
Come and find out about what
makes our school great.
RSVP essential 9660 3972

ORIENTATION DAYS

Thursday
13th, 20th & 27th
November
9:30 - 10:30am

Enrolled students will be invited
to spend the morning
in Kindergarten.



**WHERE YOUR CHILD'S
EDUCATIONAL JOURNEY
BEGINS...**

COME AND TAKE A TOUR.
Please book a time convenient
for you through the office.

206 Johnston St, Annandale NSW 2038

Phone: (02) 9660 3972

Email: annandalen-p.school@det.nsw.edu.au

Website:

<https://annandalen-p.schools.nsw.gov.au>